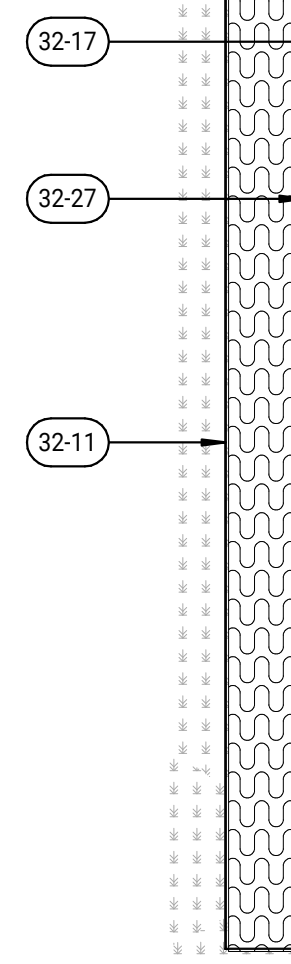
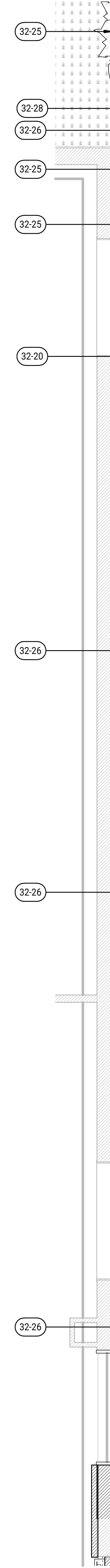


3D



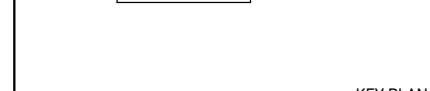
3A



1A

32-11	FENCING
32-17	PROPOSED PLAYGROUND PROVIDED BY OWNER
32-30	PROPOSED CONCRETE SIDEWALK
32-24	PROPOSED CONCRETE BOLLARD
32-25	PROPOSED PLANTING, SEE LANDSCAPE PLAN FOR SPECIES AND LOCATIONS
32-26	GALVANIZED STEEL COLUMN, SEE FINISH PLANS FOR PAINT COLOR
32-27	PROPOSED ENGINEERED WOOD FIBER (EWF) PLAYGROUND SURFACE OR SIM.
32-28	PROPOSED BARK MULCH OR SIM.
32-29	SEE CONCRETE PAVEMENT DETAIL ON CIVIL DRAWING, C901 DETAILS FOR REFERENCE.
32-30	INLINE COURTYARD DRAIN, SEE CIVIL C300 FOR SIZE AND LOCATIONS

32-11	FENCING
32-17	PROPOSED PLAYGROUND PROVIDED BY OWNER
32-30	PROPOSED CONCRETE SIDEWALK
32-24	PROPOSED CONCRETE BOLLARD
32-25	PROPOSED PLANTING, SEE LANDSCAPE PLAN FOR SPECIES AND LOCATIONS
32-26	GALVANIZED STEEL COLUMN, SEE FINISH PLANS FOR PAINT COLOR
32-27	PROPOSED ENGINEERED WOOD FIBER (EWF) PLAYGROUND SURFACE OR SIM.
32-28	PROPOSED BARK MULCH OR SIM.
32-29	SEE CONCRETE PAVEMENT DETAIL ON CIVIL DRAWING, C901 DETAILS FOR REFERENCE.
32-30	INLINE COURTYARD DRAIN, SEE CIVIL C300 FOR SIZE AND LOCATIONS

ARCHITECTURE  
BISSEPOINTE

**ARCHITECTURE**  
**RSEPOINTE**  
CONTACT: CHRIS STRASSER  
200 N HARRISON ST UNIT 101  
ALGONQUIN, IL 60102  
P: 815.930.8087  
WWW.RSEPOINTE.COM

**GENERAL CONTRACTOR**  
**A.R. CHESSON**  
CONTACT: CHRIS MORRIS  
138 E RICH BLVD  
ELIZABETH CITY, NC 27909  
P. 252.338.9171  
WWW.ARCHESSON.COM

**CIVIL ENGINEERING**  
**EASTERN CAROLINA CONSTRUCTION**

CONTACT: BRIANT ROBEY  
154 US HWY 158 E  
CAMDEN, NC 27921  
P.252.621.3570  
[WWW.EASTERNCAROLINAENGINEERING.COM](http://WWW.EASTERNCAROLINAENGINEERING.COM)

**STRUCTURAL  
TOWER PINKSTER**  
CONTACT: BAILEY RAMLER  
4 FULTON ST E #200  
GRAND RAPIDS, MI 49503  
P.616.794.6225

WWW.TOWERPINKSTER.COM

**MECHANICAL  
TOWER PINKSTER**

CONTACT: DENVER WESSELS  
4 FULTON ST E #200  
GRAND RAPIDS, MI 49503

**ELECTRICAL  
TOWER PINKSTER**  
CONTACT: CONNOR NICKELSON  
4 FULTON ST E #200  
GRAND RAPIDS MI 49503  
616.456.9944  
WWW.TOWERPINKSTER.COM

P.616.456.9944  
WWW.TOWERPINKSTER.COM

**PLUMBING  
TOWER PINKSTER**

CONTACT: DENVER WESSELS  
4 ELLIOT ST E #200

GRAND RAPIDS, MI 49503  
P.616.456.9044  
WWW.TOWERPINKSTER.COM

**AUDIO - VIDEO - LIGHTING - ACOUSTICS  
LIVESPACE**

CONTACT: JOHN HENRY

4995 STARR ST SE  
GRAND RAPIDS, MI 49546  
P.844.572.8547  
WWW.LIVESPACE.COM

**INFORMATION TECHNOLOGY  
INTULSE**

NO.	DESCRIPTION	ISSUE DATE
A	PROGRESS PLOT	10.24.2005
B	PROGRESS PLOT	11.25.2005

C	ISSUED FOR 100% DD	2026.01.30
D	PROGRESS PLOT	2026.03.13
E	ISSUED FOR PERMIT	2026.03.23
F	ISSUED FOR 95% CD	2026.04.30









\_\_\_\_\_

\_\_\_\_\_

PROJECT NAME

TOWNE SOUTH CHURCH  
2224 PEARTREE RD,  
ELIZABETH CITY, NC 27909

CURRENT ISSUE	ISSUED FOR 95% CD
---------------	-------------------

2026.04.30

SHEET NAME	ENLARGED COURTYARD
------------	--------------------

	PLAN
PROJECT NUMBER	00000000

SCALE	As indicated
-------	--------------

DRAWING NUMBER
----------------

A-121